



Application Instructions



1. AGGREGATE SELECTION

Please consult your dealer for recommended material.



Mixes with larger aggregate, such as class 2 base rock (1/2" - 3/4" minus), content are recommended for heavy use areas.

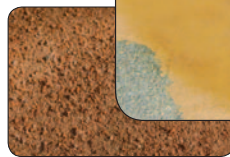
2. SITE CONDITIONS

Prepare sub-base.
Spread & level crushed stone mix/decomposed granite to a 2" depth.



3. PRE-WATER

Pre-water surface. Allow 20 - 30 mins for water to penetrate.



Recommended applicators: garden watering can or spray device.

4. PLACEMENT

Apply TechniSoil® to surface at **15 sf./gallon**. Allow TechniSoil® to fully absorb through the material.
30-45 minutes.



5. COMPACTION

Compact surface with vibratory plate compactor. We highly recommend multiple passes during this process.

For hard to reach areas, please use a hand tamper.



6. TOP COAT

Apply TechniSoil® 'top coat' at **45 sf./gallon**. Allow 24-72 hours for surface to cure before use.



- Do not apply TechniSoil 48 hours before rainfall.
- Clean equipment with water after usage.